

# —Music Theory Placement Assessment—

A Music Theory Placement Assessment is given during your visit to campus for your admission/scholarship audition, or by appointment if necessary. It allows us to accurately place you in the right theory class to help you succeed in music.

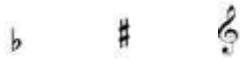
The assessment is divided into two main sections:

- Basic knowledge of musical notation & beginning music theory
- Intermediate knowledge of music theory

During your senior year in school, or before, we encourage you to begin preparing for the assessment.

But how? Consider these questions:

- Can I identify note names in both the treble and bass clefs?
- Do I recognize the following signs and know what they mean?



- Do I know what the numbers in a time signature (meter signature) stand for?
- Do I understand how note values are related? For example, a half note is equivalent to how many quarter notes? There are how many sixteenth notes in a dotted eighth note?
- Do I understand how beats are related to note values and to measures?
- Do I know the order of sharps and flats in key signatures?
- Can I identify and write major and minor key signatures?
- Do I understand what an interval is? Can I write intervals above or below a given note?
- Can I write major and minor scales in both clefs without using a key signature?
- Do I understand what a triad is? Do I know what triadic quality means? Can I spell triads—major and minor, diminished and augmented—above a given root?

## Resources:

[www.musictheory.net](http://www.musictheory.net)  
[www.teoria.com](http://www.teoria.com)

## For more information, please contact:

John Check  
Professor of Music  
University of Central Missouri  
[check@ucmo.edu](mailto:check@ucmo.edu)  
(660) 543-4587